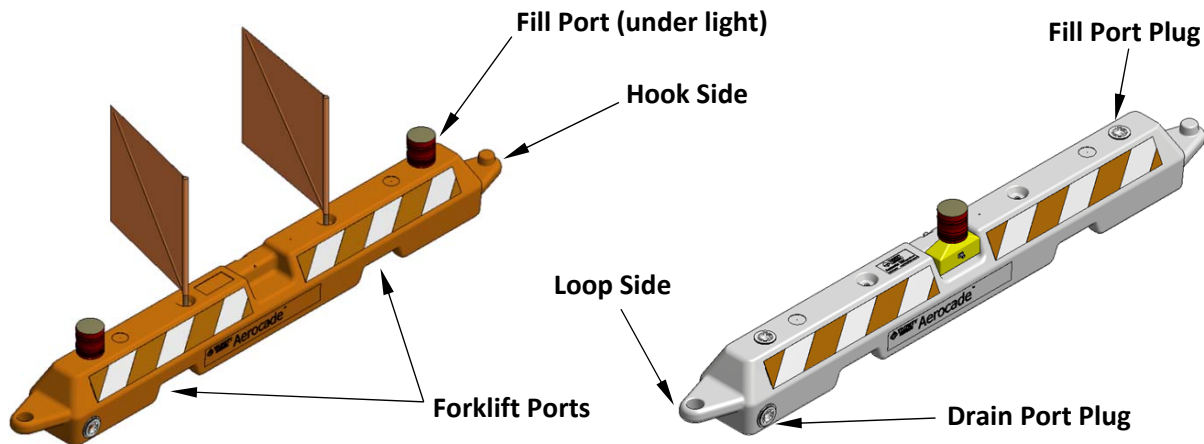


# Aerocade® Instruction Sheet

When deploying the Aerocade®, always comply with FAA Advisory Circular 150/5370-2G requirements.

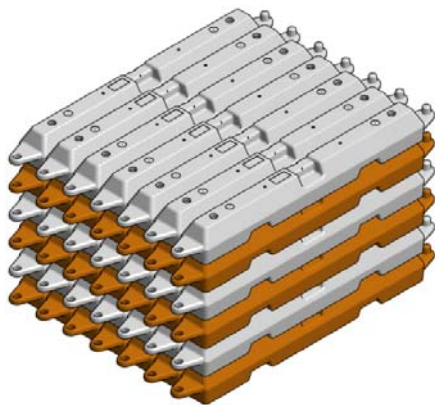
## Deployment

1. Determine your layout and calculate the number of Aerocade® units required for coverage.
2. Clear the intended area of debris for proper contact with surface.
3. Position the Aerocade® as needed, remove the fill port plugs or warning lights from either end, and then fill with approximately 22 gallons of water. \*\* (For use in freezing temperatures, please contact Trinity Highway for anti-freeze information.)
4. Replace the fill port plug or warning light by threading into the fill port. Add any required accessories such as warning lights or flags. \*\*



## Removal and Storage

1. To remove an Aerocade®, drain the water out of the drain port near the loop end and replace the cap. \*\*
2. Remove the accessories for stacking and storage.



**IT IS THE RESPONSIBILITY OF THE INSTALLER TO MAINTAIN A SAFE WORK AREA INCLUDING THE USE OF STANDARD WORK ZONE SAFETY EQUIPMENT & PPE: GLOVES, SAFETY-TOE SHOES, EYE & EAR PROTECTION**



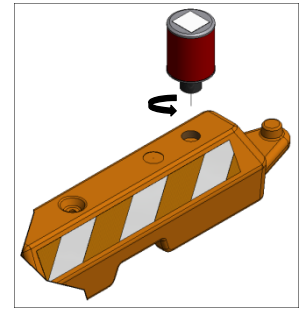
\*\*

**\*\*Note:** Use the optional Barrel Buddy wrench or a standard bung wrench to remove and replace plugs.

## Accessory Assembly

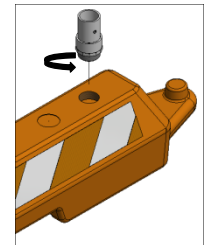
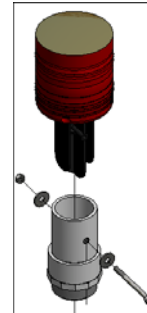
### Warning Light – Threaded-base

1. If needed, remove fill cap on one or both ends of the Aerocade®.
2. Insert the threaded base of the warning light into the hole and tighten until hand-tight.
3. Refer to manufacturer's directions for turning the light on and off.



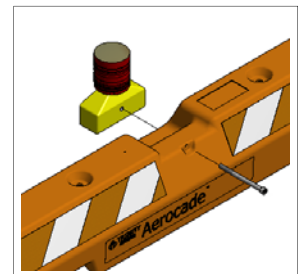
### Warning Lights – Stake-base

1. Insert stake light mounting adapter into threaded hole and tighten until hand tight.
2. Insert stake-base warning light into the adapter and align the stake base hole with the mounting hole in the stake light adapter.
3. Secure stake-base warning light to the adapter using the provided hardware.



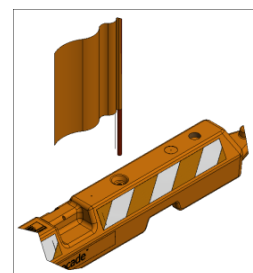
### Warning Light – Box-base

1. Position box-base warning light in the attachment recess in the middle of the Aerocade® with the metal ferrule facing out.
2. Insert the provided bolt through the opposite side of the Aerocade® and tighten into the box base using the appropriate wrench or socket.



### Warning Flag

1. Insert shaft of warning flag into the 3/4" flag mounting hole located on the top of the Aerocade® adjacent to the attachment recess.
2. Push down firmly to ensure that the flag shaft is securely seated into the receiving cup in the base of the Aerocade®.



**IT IS THE RESPONSIBILITY OF THE INSTALLER TO MAINTAIN A SAFE WORK AREA INCLUDING THE USE OF STANDARD WORK ZONE SAFETY EQUIPMENT & PPE: GLOVES, SAFETY-TOE SHOES, EYE & EAR PROTECTION**